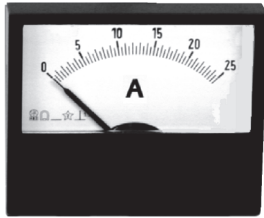




E70 - E90 cl. 1.5
E105 - E130 cl. 1.5

Amperometri da pannello per CA
AC panel ammeters



Dati Tecnici

- Precisione ± 1.5 % del valore di fondo scala
- Autoconsumo 1 VA circa (portata 5 A)
- Tensione di riferimento per isolamento 0,6 kV
- Tensione di prova 2 kV (1' a 50 Hz)
- Frequenza di normale funzionamento 45 ÷ 65 Hz
- Sovraccarico permanente 1,2 In
- Sovraccarico Istantaneo 10 In
- Temperatura di funzionamento -25°C ÷ +50°C
- Temperatura di magazzino -40°C ÷ +80°C
- Grado di protezione custodia IP52
- Grado di protezione morsetti IP00 senza coprimorsetti / IP20 con coprimorsetti
- Costruzione a norme IEC, VDE

Technical Data

- Accuracy ± 1.5 % of full scale value
- Self-consumption 1 VA approx. (range 5 A)
- Insulation reference voltage 0.6 kV
- Test voltage 2 kV (1' at 50 Hz)
- Operating frequency 45 ÷ 65 Hz
- Continuous overload 1,2 In
- Instantaneous overload 10 In
- Operating temperature -25°C ÷ +50°C
- Storage temperature -40°C ÷ +80°C
- Protection for housing IP52
- Protection for terminals IP00 without terminals cover / IP20 with terminals cover
- Manufactured according to IEC, VDE

INSERIZIONE DIRETTA / DIRECT INSERTION

PORTATA RANGE	CODICE / CODE			
	E70	E90	E105	E130
1 A	E70001AD	E90001AD	E105001AD	E130001AD
5 A	E70005AD	E90005AD	E105005AD	E130005AD
10 A	E70010AD	E90010AD	E105010AD	E130010AD
15 A	E70015AD	E90015AD	E105015AD	E130015AD
20 A	E70020AD	E90020AD	E105020AD	E130020AD
25 A	E70025AD	E90025AD	E105025AD	E130025AD
30 A	E70030AD	E90030AD	E105030AD	E130030AD
40 A	E70040AD	E90040AD	E105040AD	E130040AD

INSERIZIONE SU TA / INSERTION ON CT

PORTATA RANGE	CODICE / CODE			
	E70	E90	E105	E130
1 A ÷ 10 kA / 5 A	E70...A5C	E90...A5C	E105...A5C	E130...A5C
1 A ÷ 10 kA / 1 A	E70...A1C	E90...A1C	E105...A1C	E130...A1C

"..." = valore portata (Es: 50/5 A = E70050A5C, 2000/1 A = E1052K0A1C)

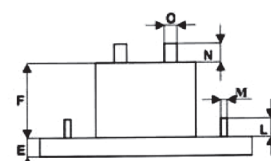
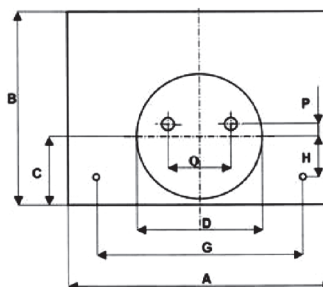
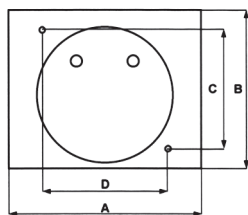
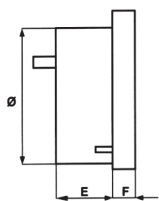
"..." = range value (Ex: 50/5 A = E70050A5C, 2000/1 A = E1052K0A1C)

1 In o 2 In o 5 In : per fondo scala 1 In, 2 In o 5 In aggiungere 1, 2 o 5 alla fine del codice in tabella (Es: E90600A5C2, E704K0A1C1)
1 In or 2 In or 5 In : for end scale 1 In, 2 In or 5 In add 1, 2 or 5 to the end of table code (Ex: E90600A5C2, E704K0A1C1)

Dimensioni di ingombro (mm) / Dimensions (mm)

Codice code	A	B	C	D	E	F	φ
E70	70	60	44	52	22	12	55
E90	90	80	60	65	22	14	70

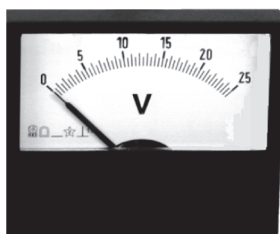
Codice code	A	B	C	D	E	F	G	H	L	M	N	O	P	Q
E105	105	79	30	55	11.5	35	82	14	14	M3	17	M5	5	30
E130	130	98	35.5	55	11.5	35	95	17	14	M3	17	M5	5	30





E70 - E90 cl. 1.5
E105 - E130 cl. 1.5

Voltmetri da pannello per CA
AC panel voltmeters



Dati Tecnici

- Precisione	± 1.5 % del valore di fondo scala
- Autoconsumo	1 VA circa (portata 100 V)
- Tensione di riferimento per isolamento	0.6 kV
- Tensione di prova	2 kV (1' a 50 Hz)
- Frequenza di normale funzionamento	45 ÷ 65 Hz
- Sovraccarico permanente	1.2 Vn
- Sovraccarico Istantaneo	2 Vn
- Temperatura di funzionamento	-25°C ÷ +50°C
- Temperatura di magazzino	-40°C ÷ +80°C
- Grado di protezione custodia	IP52
- Grado di protezione morsetti	IP00 senza coprimorsetti / IP20 con coprimorsetti
- Costruzione a norme	IEC, VDE

Technical Data

- Accuracy	± 1.5 % of full scale value
- Self-consumption	1 VA approx. (range 100 V)
- Insulation reference voltage	0.6 kV
- Test voltage	2 kV (1' at 50 Hz)
- Operating frequency	45 ÷ 65 Hz
- Continuous overload	1.2 Vn
- Instantaneous overload	2 Vn
- Operating temperature	-25°C ÷ +50°C
- Storage temperature	-40°C ÷ +80°C
- Protection for housing	IP52
- Protection for terminals	IP00 without terminals cover / IP20 with terminals cover
- Manufactured according to	IEC, VDE

INSERIZIONE DIRETTA / DIRECT INSERTION

PORTATA RANGE	CODICE / CODE			
	E70	E90	E105	E130
40 V	E70040VD	E90040VD	E105040VD	E130040VD
50 V	E70050VD	E90050VD	E105050VD	E130050VD
100 V	E70100VD	E90100VD	E105100VD	E130100VD
150 V	E70150VD	E90150VD	E105150VD	E130150VD
200 V	E70200VD	E90200VD	E105200VD	E130200VD
300 V	E70300VD	E90300VD	E105300VD	E130300VD
400 V	E70400VD	E90400VD	E105400VD	E130400VD
500 V	E70500VD	E90500VD	E105500VD	E130500VD

INSERIZIONE SU TV / INSERTION ON VT

PORTATA RANGE	CODICE / CODE			
	E70	E90	E105	E130
220V ÷ 1000/100V	E70...100V	E90...100V	E105...100V	E130...100V

"..." = valore portata (Es: 800/100V = E70800100V, 1000/100V = E1051K0100V)

"..." = range value (Ex: 800/100V = E70800100V, 1000/100V = E1051K0100V)

Realizzabili altre portate a richiesta

Other ranges available on request

Dimensioni di ingombro (mm) / Dimensions (mm)

Codice code	A	B	C	D	E	F	ø
E70	70	60	44	52	22	12	55
E90	90	80	60	65	22	14	70

Codice code	A	B	C	D	E	F	G	H	L	M	N	O	P	Q
E105	105	79	30	55	11.5	35	82	14	14	M3	17	M5	5	30
E130	130	98	35.5	55	11.5	35	95	17	14	M3	17	M5	5	30

