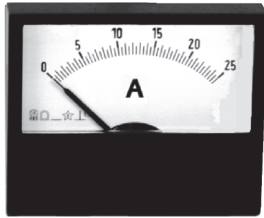




W70 - W90 cl. 1.5  
W105 - W130 cl. 1.5

Amperometri da pannello per CC  
DC panel ammeters



**Dati Tecnici**

- Precisione ± 1,5 % del valore di fondo scala
- Autoconsumo 60 mV Circa (10 mA ÷ 40 A)
- Tensione di riferimento per isolamento 0,6 kV
- Tensione di prova 2 kV (1' a 50 Hz)
- Sovraccarico permanente 1,2 I<sub>n</sub>
- Sovraccarico Istantaneo 10 I<sub>n</sub>
- Temperatura di funzionamento -25°C ÷ +50°C
- Temperatura di magazzino -40°C ÷ +80°C
- Grado di protezione custodia IP52
- Grado di protezione morsetti IP00 senza coprimorsetti / IP20 con coprimorsetti
- Costruzione a norme IEC, VDE

**Technical Data**

- Accuracy ± 1,5 % of full scale value
- Self-consumption 60 mV Circa (10 mA ÷ 40 A)
- Insulation reference voltage 0.6 kV
- Test voltage 2 kV (1' at 50 Hz)
- Continuous overload 1,2 I<sub>n</sub>
- Instantaneous overload 10 I<sub>n</sub>
- Operating temperature -25°C ÷ +50°C
- Storage temperature -40°C ÷ +80°C
- Protection for housing IP52
- Protection for terminals IP00 without terminals cover / IP20 with terminals cover
- Manufactured according to IEC, VDE

**INSERZIONE DIRETTA / DIRECT INSERTION**

PORTATA RANGE	CODICE / CODE			
	W70	W90	W105	W130
50 µA	W70050UA	W90050UA	W105050UA	W130050UA
100 µA	W70100UA	W90100UA	W105100UA	W130100UA
150 µA	W70150UA	W90150UA	W105150UA	W130150UA
250 µA	W70250UA	W90250UA	W105250UA	W130250UA
400 µA	W70400UA	W90400UA	W105400UA	W130400UA
600 µA	W70600UA	W90600UA	W105600UA	W130600UA
1 mA	W70001MA	W90001MA	W105001MA	W130001MA
5 mA	W70005MA	W90005MA	W105005MA	W130005MA
20 mA	W70020MA	W90020MA	W105020MA	W130020MA
4-20 mA	W70420MA	W90420MA	W105420MA	W130420MA
1 A	W70001AD	W90001AD	W105001AD	W130001AD
1,5 A	W70002AD	W90002AD	W105002AD	W130002AD
2,5 A	W70003AD	W90003AD	W105003AD	W130003AD
4 A	W70004AD	W90004AD	W105004AD	W130004AD
6 A	W70006AD	W90006AD	W105006AD	W130006AD
1 A ÷ 15 kA / 60 mV	W70...60MV	W90...60MV	W105...60MV	W130...60MV

"..." = valore portata (Es: 50 A / 60 mV = W7005060MV, 2000 A / 60 mV = W1052K060MV)

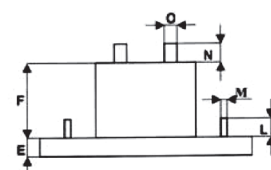
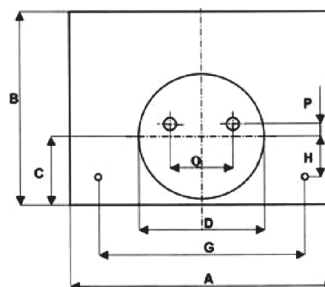
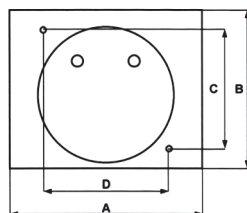
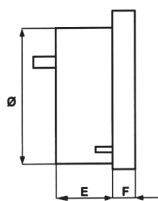
"..." = range value (Ex: 50 A / 60 mV = W7005060MV, 2000 A / 60 mV = W1052K060MV)

Realizzabili altre portate a richiesta  
Other ranges available on request

**Dimensioni di ingombro (mm) / Dimensions (mm)**

Codice code	A	B	C	D	E	F	φ
W70	70	60	44	52	22	12	55
W90	90	80	60	65	22	14	70

Codice code	A	B	C	D	E	F	G	H	L	M	N	O	P	Q
W105	105	79	30	55	11.5	35	82	14	14	M3	17	M5	5	30
W130	130	98	35.5	55	11.5	35	95	17	14	M3	17	M5	5	30





W70 - W90 cl. 1.5  
W105 - W130 cl. 1.5

Voltmetri da pannello per CC  
DC panel voltmeters



#### Dati Tecnici

- Precisione ± 1.5 % del valore di fondo scala
- Autoconsumo 1 mA circa (1000 Ω/V)
- Tensione di riferimento per isolamento 0.6 kV
- Tensione di prova 2 kV (1' a 50 Hz)
- Sovraccarico permanente 1.2 Vn
- Sovraccarico Istantaneo 2 Vn
- Temperatura di funzionamento -25°C ÷ +50°C
- Temperatura di magazzino -40°C ÷ +80°C
- Grado di protezione custodia IP52
- Grado di protezione morsetti IP00 senza coprimorsetti / IP20 con coprimorsetti
- Costruzione a norme IEC, VDE

#### Technical Data

- Accuracy ± 1.5 % of full scale value
- Self-consumption 1 mA circa (1000 Ω/V)
- Insulation reference voltage 0.6 kV
- Test voltage 2 kV (1' at 50 Hz)
- Continuous overload 1.2 Vn
- Instantaneous overload 2 Vn
- Operating temperature -25°C ÷ +50°C
- Storage temperature -40°C ÷ +80°C
- Protection for housing IP52
- Protection for terminals IP00 without terminals cover / IP20 with terminals cover
- Manufactured according to IEC, VDE

#### INSERIZIONE DIRETTA / DIRECT INSERTION

PORTATA RANGE	CODICE / CODE			
	W70	W90	W105	W130
100 mV	W70100MV	W90100MV	W105100MV	W130100MV
300 mV	W70300MV	W90300MV	W105300MV	W130300MV
500 mV	W70500MV	W90500MV	W105500MV	W130500MV
1 V	W70001VD	W90001VD	W105001VD	W130001VD
2,5 V	W70002VD	W90002VD	W105002VD	W130002VD
6 V	W70006VD	W90006VD	W105006VD	W130006VD
10 V	W70010VD	W90010VD	W105010VD	W130010VD
25 V	W70025VD	W90025VD	W105025VD	W130025VD
60 V	W70060VD	W90060VD	W105060VD	W130060VD
100 V	W70100VD	W90100VD	W105100VD	W130100VD
250 V	W70250VD	W90250VD	W105250VD	W130250VD
400 V	W70400VD	W90400VD	W105400VD	W130400VD
600 V	W70600VD	W90600VD	W105600VD	W130600VD

#### INSERIZIONE SU DIVISORE/ INSERTION ON VOLTAGE DIVIDER 100 V - 1 mA

PORTATA RANGE	CODICE / CODE			
	W70	W90	W105	W130
220V ÷ 5000/100V	W70...100V	W90...100V	W105...100V	W130...100V

"..." = valore portata (Es: 800/100V = W70800100V, 1000/100V = W1051K0100V) Realizzabili altre portate a richiesta

"..." = range value (Ex: 800/100V = W70800100V, 1000/100V = W1051K0100V) Other ranges available on request

#### Dimensioni di ingombro (mm) / Dimensions (mm)

Codice code	A	B	C	D	E	F	ø
W70	70	60	44	52	22	12	55
W90	90	80	60	65	22	14	70

Codice code	A	B	C	D	E	F	G	H	L	M	N	O	P	Q
W105	105	79	30	55	11.5	35	82	14	14	M3	17	M5	5	30
W130	130	98	35.5	55	11.5	35	95	17	14	M3	17	M5	5	30

