



F cl. 0.5

Frequenzimetri ad indice scala 90°
Pointer frequency meter, 90° scale



Dati Tecnici

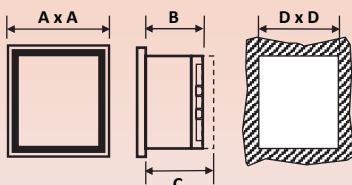
- Precisione ± 0.5 % del valore di fondo scala
- Autoconsumo 1,5 VA circa (portata 100 V)
- Tensione di riferimento per isolamento 0,6 kV
- Tensione di prova 2 kV (1' a 50 Hz)
- Sovraccarico permanente 1,2 Vn
- Sovraccarico Istantaneo 2 Vn
- Temperatura di funzionamento -25°C ÷ +50°C
- Temperatura di magazzino -40°C ÷ +80°C
- Grado di protezione custodia IP52
- Grado di protezione morsetti IP00 senza coprimorsetti / IP20 con coprimorsetti
- Costruzione a norme CEI, IEC, DIN, VDE

Technical Data

- Accuracy ± 0.5 % of full scale value
- Self-consumption 1,5 VA approx. (range 100 V)
- Insulation reference voltage 0.6 kV
- Test voltage 2 kV (1' at 50 Hz)
- Continuous overload 1,2 Vn
- Instantaneous overload 2 Vn
- Operating temperature -25°C ÷ +50°C
- Storage temperature -40°C ÷ +80°C
- Protection for housing IP52
- Protection for terminals IP00 without terminals cover / IP20 with terminals cover
- Manufactured according to CEI, IEC, DIN, VDE

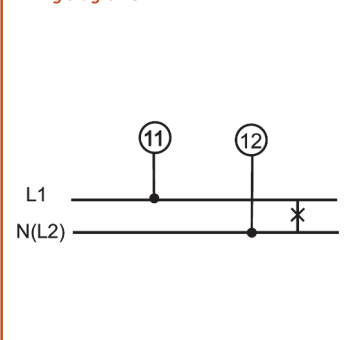
Dimensioni di ingombro e foratura pannello (mm)

Dimensions and panel cut-out (mm)



Codice code	A x A	B	C	D x D
F48	48x48	54	63	45x45
F72	72x72	54	63	68x68
F96	96x96	54	63	92x92
F144	144x144	54	63	138x138

Schemi di inserzione
Wiring diagrams

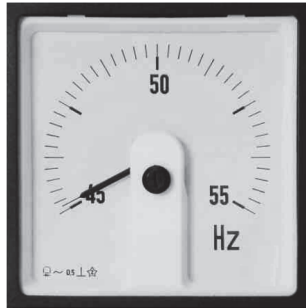


PORTATA RANGE	SCALA SCALE	CODICE / CODE			
		48 X 48	72 X 72	96 X 96	144 X144
57,7 ÷ 63,5 V	45 ÷ 55 Hz	F484551V	F724551V	F964551V	F1444551V
100 ÷ 127 V		F484552V	F724552V	F964552V	F1444552V
208 ÷ 240 V		F484553V	F724553V	F964553V	F1444553V
380 ÷ 415 V		F484554V	F724554V	F964554V	F1444554V
440 ÷ 500 V		F484555V	F724555V	F964555V	F1444555V
57,7 ÷ 63,5 V	45 ÷ 65 Hz	F484651V	F724651V	F964651V	F1444651V
100 ÷ 127 V		F484652V	F724652V	F964652V	F1444652V
208 ÷ 240 V		F484653V	F724653V	F964653V	F1444653V
380 ÷ 415 V		F484654V	F724654V	F964654V	F1444654V
440 ÷ 500 V		F484655V	F724655V	F964655V	F1444655V
57,7 ÷ 63,5 V	55 ÷ 65 Hz	F485651V	F725651V	F965651V	F1445651V
100 ÷ 127 V		F485652V	F725652V	F965652V	F1445652V
208 ÷ 240 V		F485653V	F725653V	F965653V	F1445653V
380 ÷ 415 V		F485654V	F725654V	F965654V	F1445654V
440 ÷ 500 V		F485655V	F725655V	F965655V	F1445655V
57,7 ÷ 63,5 V	360 ÷ 440 Hz	F4836441V	F7236441V	F9636441V	F14436441V
100 ÷ 127 V		F4836442V	F7236442V	F9636442V	F14436442V
208 ÷ 240 V		F4836443V	F7236443V	F9636443V	F14436443V
380 ÷ 415 V		F4836444V	F7236444V	F9636444V	F14436444V
440 ÷ 500 V		F4836445V	F7236445V	F9636445V	F14436445V
57,7 ÷ 63,5 V	380 ÷ 420 Hz	F4838421V	F7238421V	F9638421V	F14438421V
100 ÷ 127 V		F4838422V	F7238422V	F9638422V	F14438422V
208 ÷ 240 V		F4838423V	F7238423V	F9638423V	F14438423V
380 ÷ 415 V		F4838424V	F7238424V	F9638424V	F14438424V
440 ÷ 500 V		F4838425V	F7238425V	F9638425V	F14438425V



FL cl. 0.5

Frequenzimetri ad indice scala 240°
Pointer frequency meter, 240° scale



Dati Tecnici

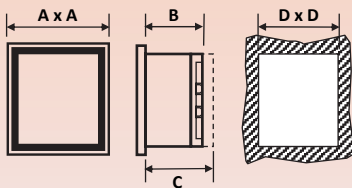
- Precisione ± 0.5 % del valore di fondo scala
- Autoconsumo 1,5 VA circa (portata 100 V)
- Tensione di riferimento per isolamento 0,6 kV
- Tensione di prova 2 kV (1' a 50 Hz)
- Sovraccarico permanente 1,2 Vn
- Sovraccarico Istantaneo 2 Vn
- Temperatura di funzionamento -25°C ÷ +50°C
- Temperatura di magazzino -40°C ÷ +80°C
- Grado di protezione custodia IP52
- Grado di protezione morsetti IP00 senza coprimorsetti / IP20 con coprimorsetti
- Costruzione a norme CEI, IEC, DIN, VDE

Technical Data

- Accuracy ± 0.5 % of full scale value
- Self-consumption 1,5 VA approx. (range 100 V)
- Insulation reference voltage 0.6 kV
- Test voltage 2 kV (1' at 50 Hz)
- Continuous overload 1,2 Vn
- Instantaneous overload 2 Vn
- Operating temperature -25°C ÷ +50°C
- Storage temperature -40°C ÷ +80°C
- Protection for housing IP52
- Protection for terminals IP00 without terminals cover / IP20 with terminals cover
- Manufactured according to CEI, IEC, DIN, VDE

Dimensioni di ingombro e foratura pannello (mm)

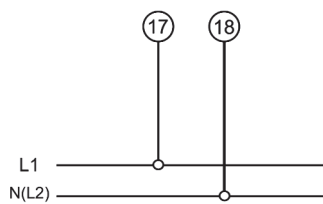
Dimensions and panel cut-out (mm)



Codice <i>code</i>	A x A	B	C	D x D
FL48	48x48	54	63	45x45
FL72	72x72	54	63	68x68
FL96	96x96	54	63	92x92
FL144	144x144	54	63	138x138

Schemi di inserzione

Wiring diagrams



PORTATA <i>RANGE</i>	SCALA <i>SCALE</i>	CODICE / <i>CODE</i>			
		48 X 48	72 X 72	96 X 96	144 X 144
57,7 ÷ 63,5 V	45 ÷ 55 Hz	FL484551V	FL724551V	FL964551V	FL1444551V
100 ÷ 127 V		FL484552V	FL724552V	FL964552V	FL1444552V
208 ÷ 240 V		FL484553V	FL724553V	FL964553V	FL1444553V
380 ÷ 415 V		FL484554V	FL724554V	FL964554V	FL1444554V
440 ÷ 500 V		FL484555V	FL724555V	FL964555V	FL1444555V
57,7 ÷ 63,5 V	45 ÷ 65 Hz	FL484651V	FL724651V	FL964651V	FL1444651V
100 ÷ 127 V		FL484652V	FL724652V	FL964652V	FL1444652V
208 ÷ 240 V		FL484653V	FL724653V	FL964653V	FL1444653V
380 ÷ 415 V		FL484654V	FL724654V	FL964654V	FL1444654V
440 ÷ 500 V		FL484655V	FL724655V	FL964655V	FL1444655V
57,7 ÷ 63,5 V	55 ÷ 65 Hz	FL485651V	FL725651V	FL965651V	FL1445651V
100 ÷ 127 V		FL485652V	FL725652V	FL965652V	FL1445652V
208 ÷ 240 V		FL485653V	FL725653V	FL965653V	FL1445653V
380 ÷ 415 V		FL485654V	FL725654V	FL965654V	FL1445654V
440 ÷ 500 V		FL485655V	FL725655V	FL965655V	FL1445655V
57,7 ÷ 63,5 V	360 ÷ 440 Hz	FL4836441V	FL7236441V	FL9636441V	FL14436441V
100 ÷ 127 V		FL4836442V	FL7236442V	FL9636442V	FL14436442V
208 ÷ 240 V		FL4836443V	FL7236443V	FL9636443V	FL14436443V
380 ÷ 415 V		FL4836444V	FL7236444V	FL9636444V	FL14436444V
440 ÷ 500 V		FL4836445V	FL7236445V	FL9636445V	FL14436445V
57,7 ÷ 63,5 V	380 ÷ 420 Hz	FL4838421V	FL7238421V	FL9638421V	FL14438421V
100 ÷ 127 V		FL4838422V	FL7238422V	FL9638422V	FL14438422V
208 ÷ 240 V		FL4838423V	FL7238423V	FL9638423V	FL14438423V
380 ÷ 415 V		FL4838424V	FL7238424V	FL9638424V	FL14438424V
440 ÷ 500 V		FL4838425V	FL7238425V	FL9638425V	FL14438425V